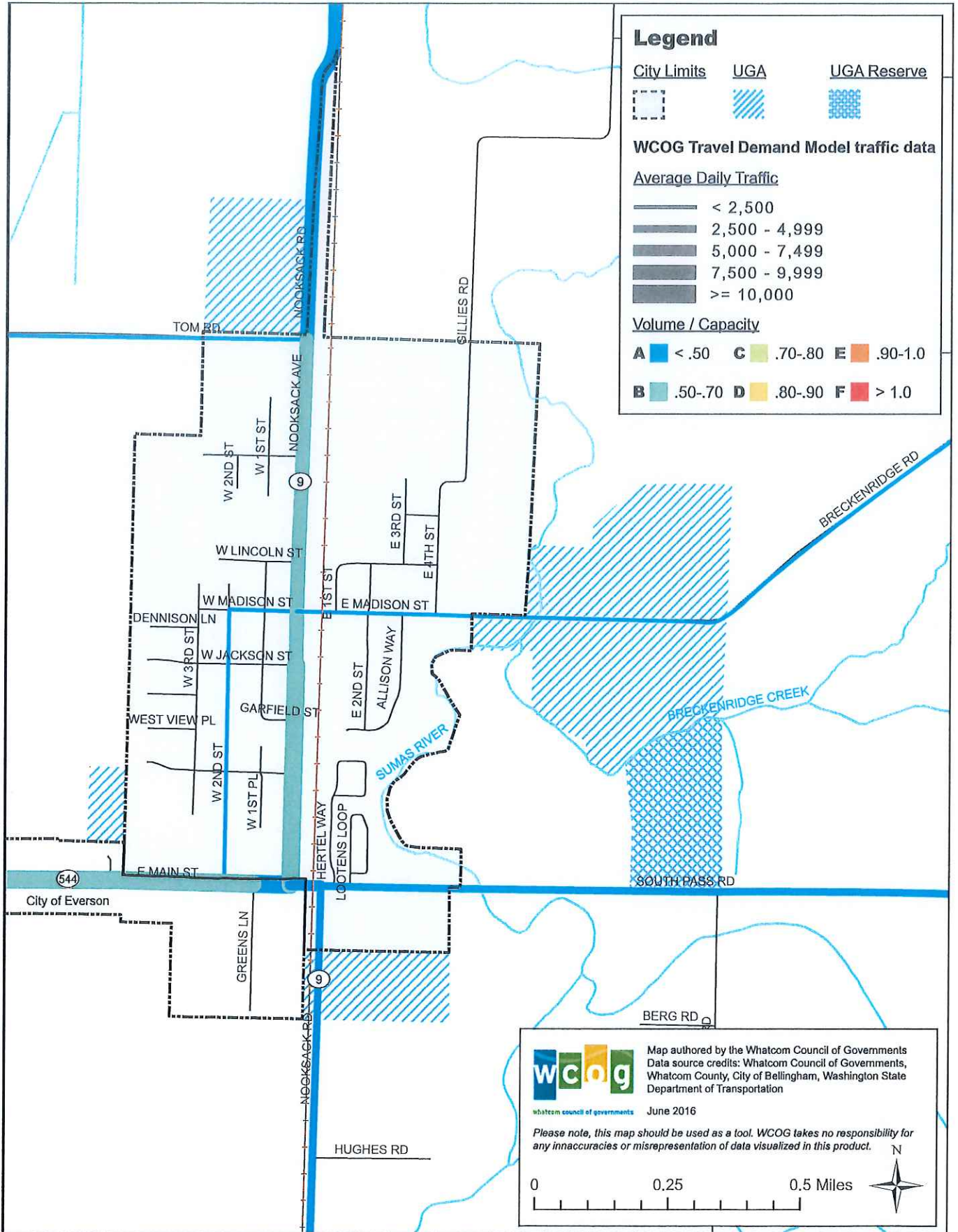


Figure 6-5: Nooksack Traffic Volume and Congestion | 2036



wcog Map authored by the Whatcom Council of Governments
 Data source credits: Whatcom Council of Governments, Whatcom County, City of Bellingham, Washington State Department of Transportation
 June 2016

Please note, this map should be used as a tool. WCOG takes no responsibility for any inaccuracies or misrepresentation of data visualized in this product.

0 0.25 0.5 Miles